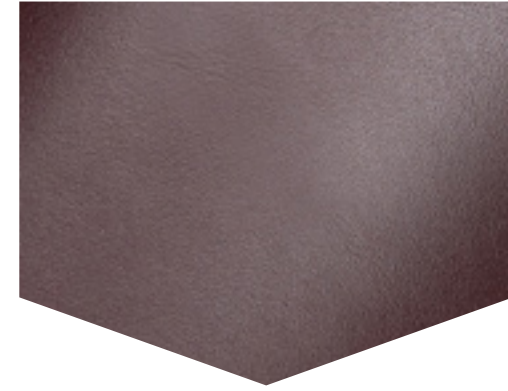


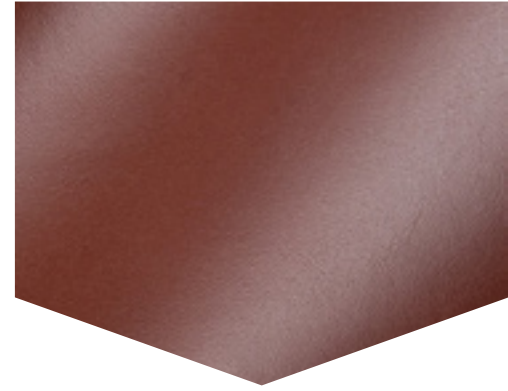
# CLARENCE



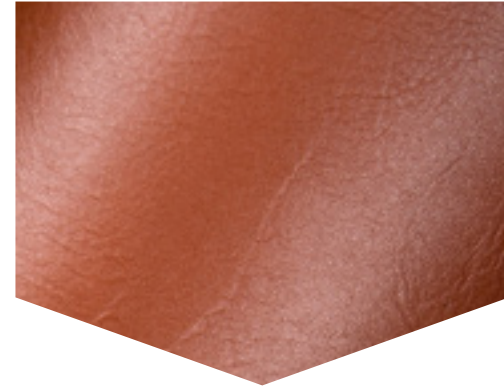
Malbec



Redwood



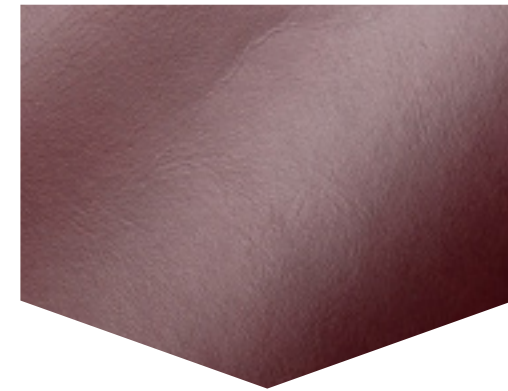
Whiskey



Cider



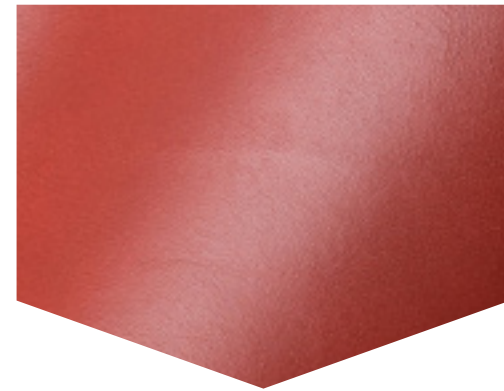
Cordovan



Firestone



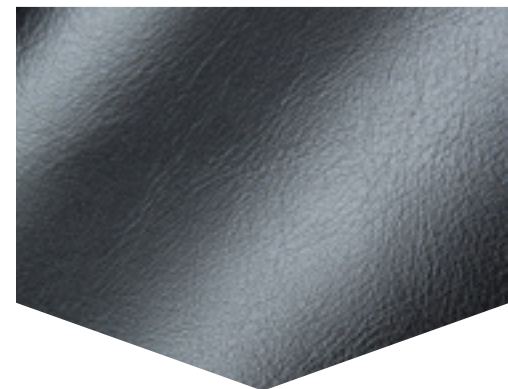
Vermillion



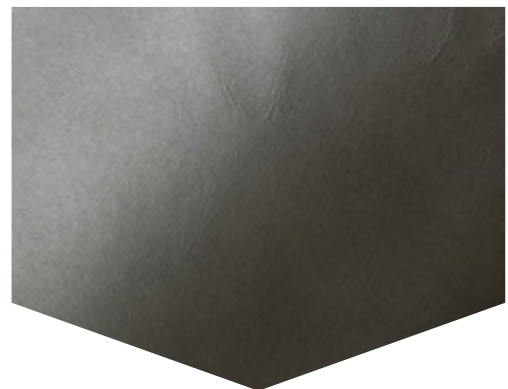
Clove



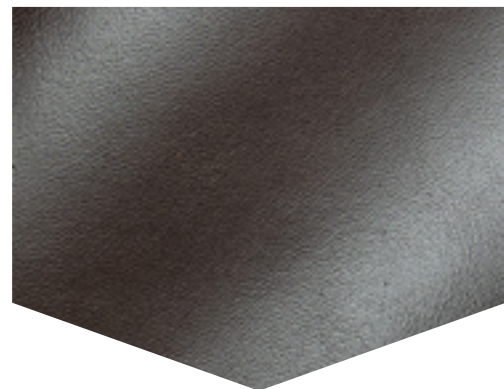
Derby



Flagstone



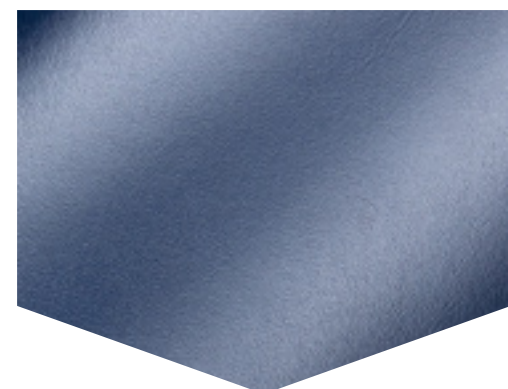
Heritage



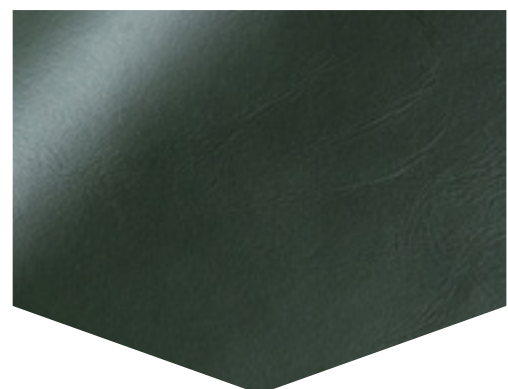
Sepia



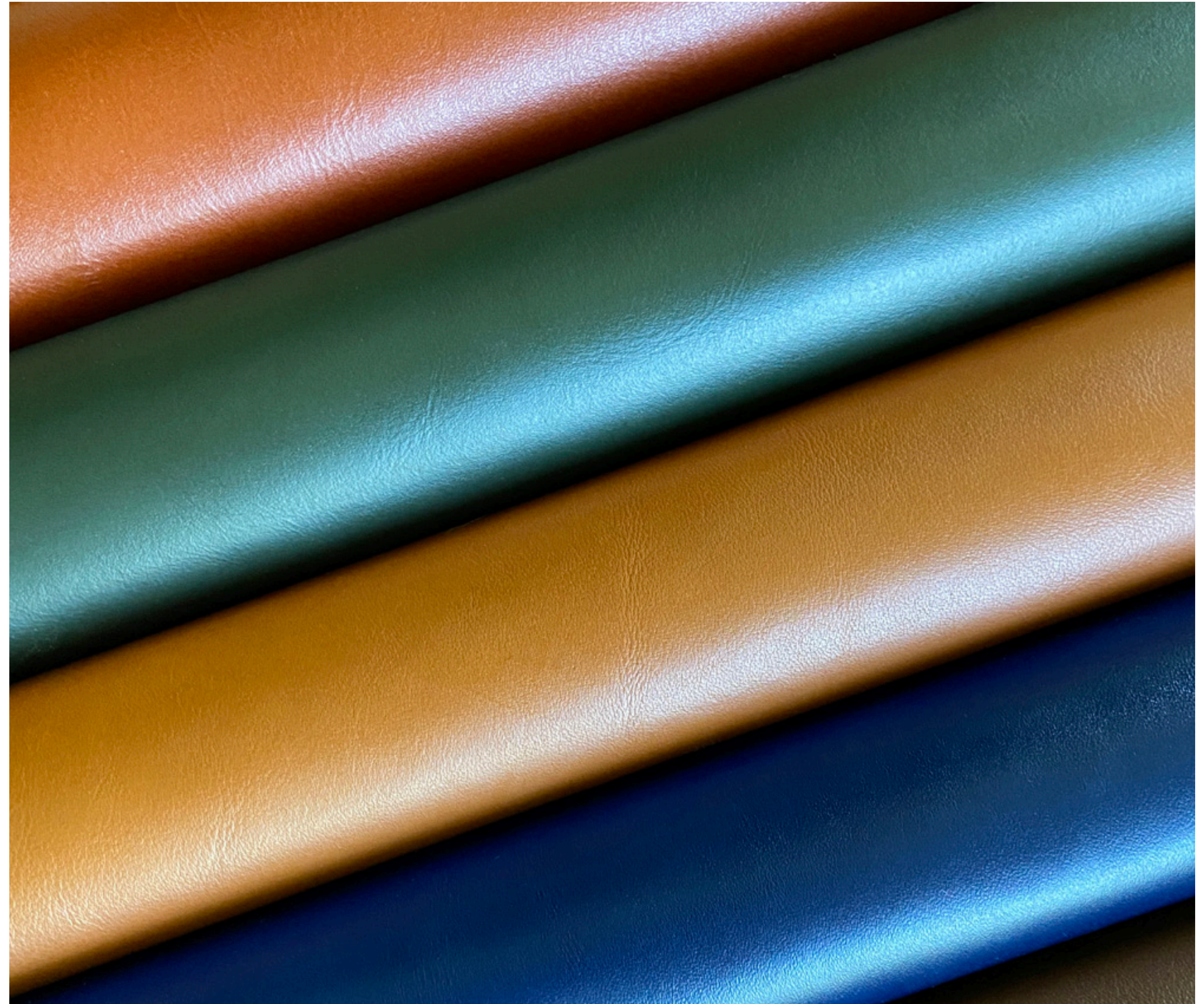
Sapphire



Polo Green



Vintage Olive



# SPECS & INFO



**SUITABLE FOR:**  
CONTRACT, HOSPITALITY, RESIDENTIAL  
INDOOR APPLICATIONS ONLY

## GENERAL SPECIFICATIONS

<b>CONTENT:</b>	100% Genuine Leather
<b>THICKNESS:</b>	1.0-1.2 mm
<b>AVERAGE HIDE SIZE:</b>	50 - 55 sq. ft.
<b>STAIN RESISTANCE:</b>	Crypton® Leather Soil/Stain Protection
<b>CLASSIFICATION:</b>	Semi-Aniline, Crypton®

## PERFORMANCE SPECIFICATIONS

### ABRASION RESISTANCE

ASTM D7255: CS10 Wheel Taber 500 Cycles/500 gram weight

### LIGHT FASTNESS

ISO 105-B02: Blue Wool Scale  $\geq 4$

### WET CROCKING

ASTM D5053 Class 4

### ANTIBACTERIAL

AATCC 100 99.9% Reduction of Bacteria

## REDUCED ENVIRONMENTAL IMPACT

This product does not pose any exposure risks associated with the substances listed in California Proposition 65  
No added flame retardant chemicals - AB2998 Compliant  
Finished without the use of solvents or lead  
Emits low VOCs - SCS Indoor Gold Advantage Certificate

## FLAMMABILITY REQUIREMENTS

California Fire Code Technical Bulletin No. 117-2013  
NFPA 260  
IMO 2010 FTP Part 8 (A.652(16))

## CRYPTON® LEATHER CARE & CLEANING

Crypton® leathers provide the industry's greatest stain resistance and cleanability.

Occasional dusting with a clean, dry cloth or light vacuuming should be all that is necessary for regular cleaning and maintenance for your leather upholstery. In the case of a spill, wipe excess liquid immediately and let air dry. Crypton protected leathers can be disinfected with Clorox® products and up to a 5% bleach solution (sodium hypochlorite).

Refer to Crypton Leather Care & Cleaning Guide for additional cleaning instructions.

## PRODUCT NOTES

Leather is a natural product and will vary slightly from hide to hide. Available in full hide increments only.  
Special Order Leather Pattern - Additional lead time required.

# UNITED

SINCE *Fabrics* 1946

800.347.8344  
UnitedFabrics.com