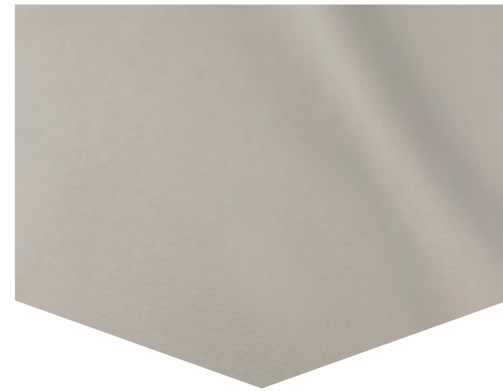


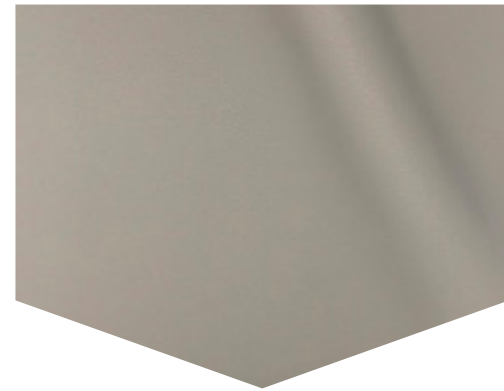
Sugar



Fleece



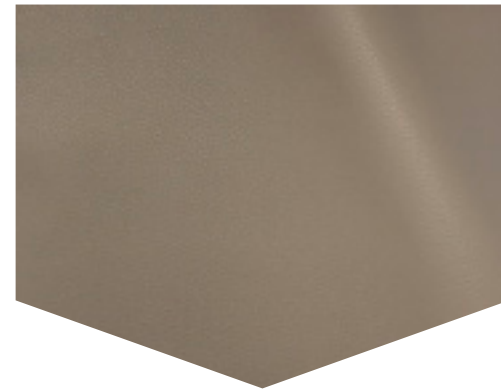
Quartz



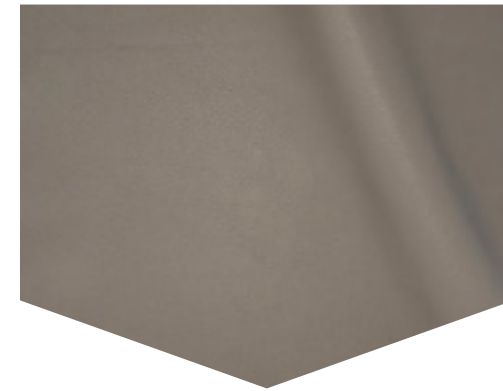
Buff



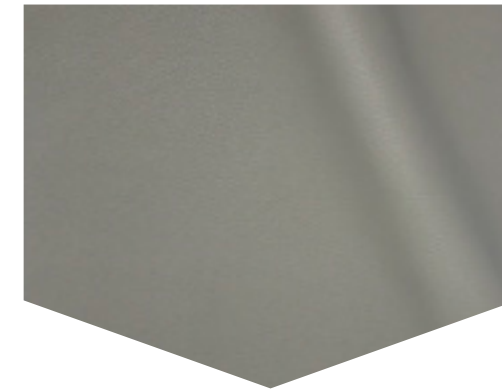
Antler



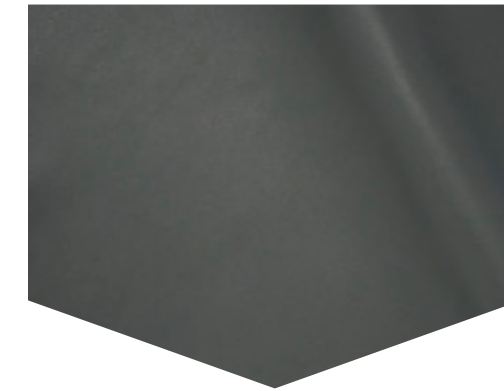
Pewter



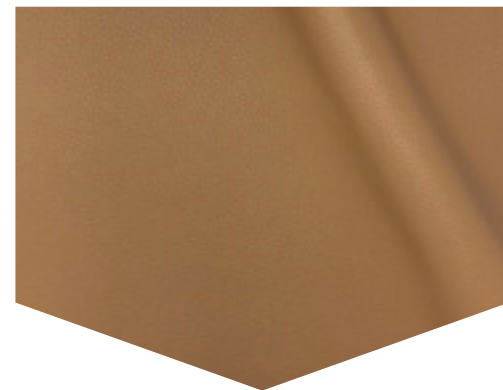
Cliff



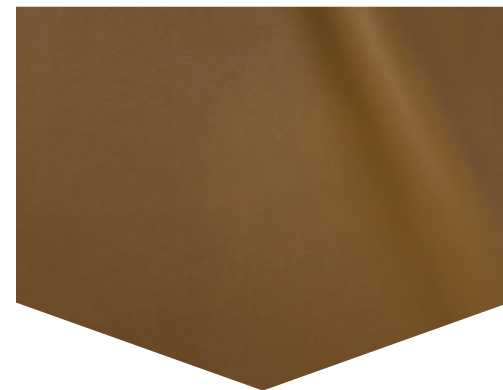
Stonewall



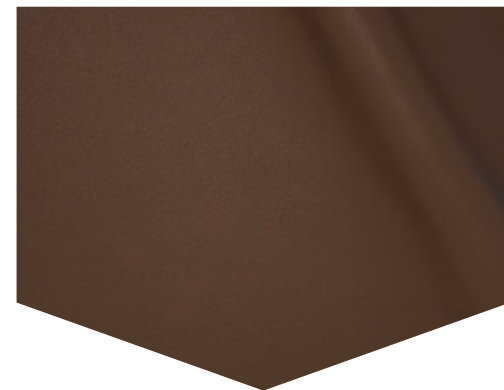
Butterscotch



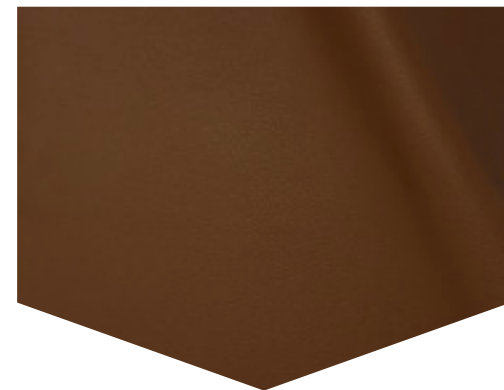
Ginger



Thicket



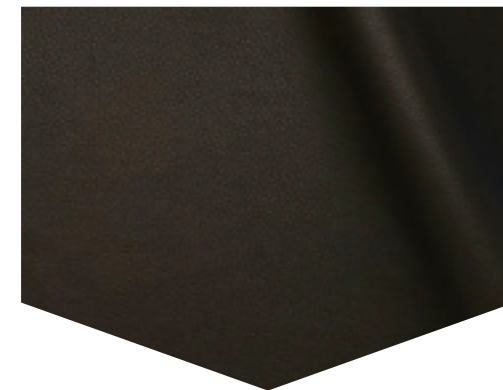
Teak



Molasses



Sepia



Iron



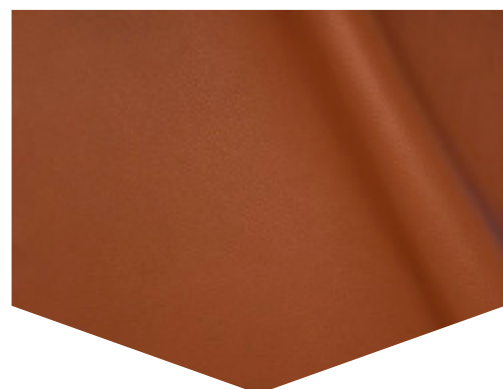
Noir



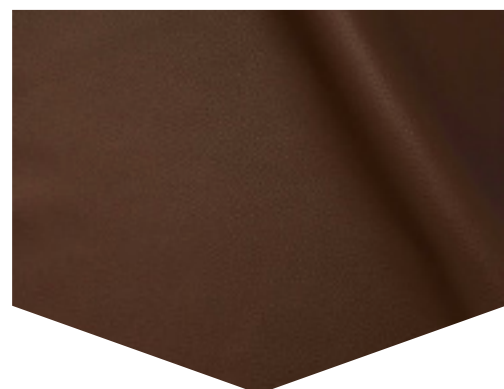
Clementine



Adobe



Saddle



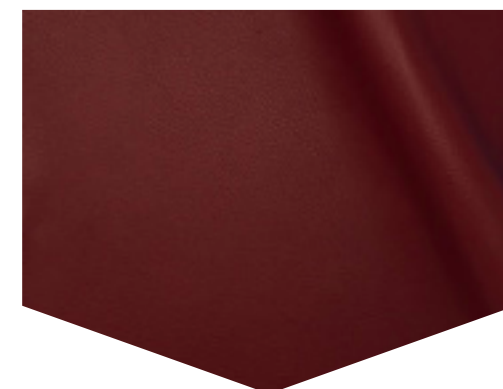
Cedar



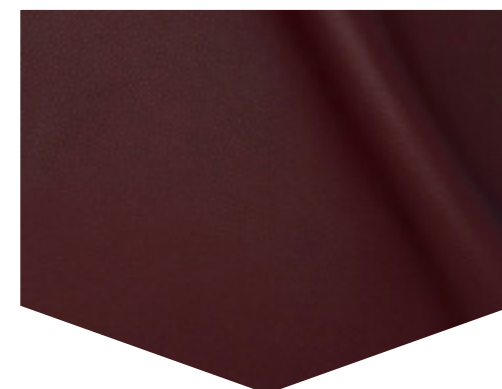
Paprika



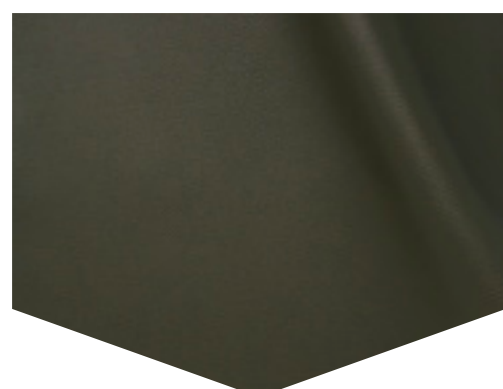
Pimento



Garnet



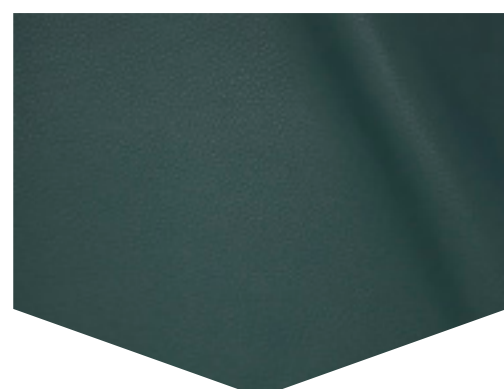
Loden



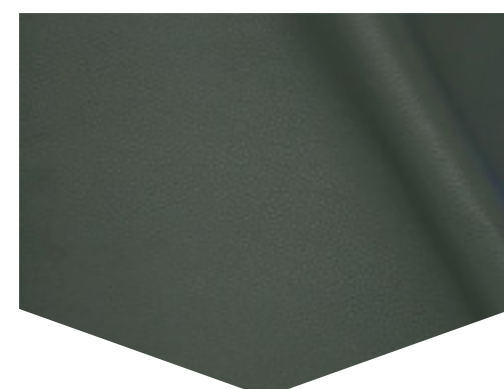
Sherwood



Juniper



Silversage



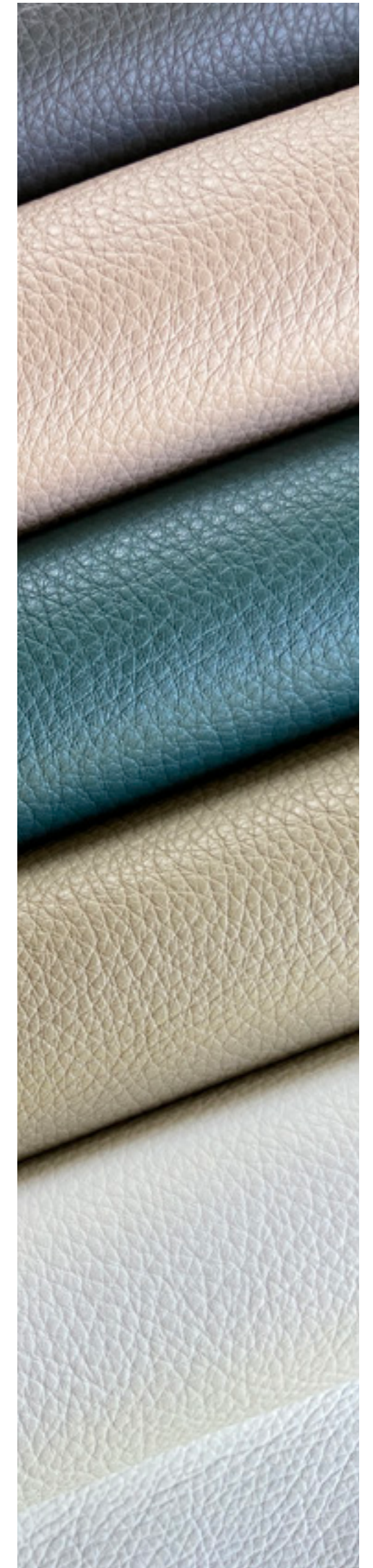
Spruce



Neptune



Navy



SPECS & INFO



SUITABLE FOR:
CONTRACT, HOSPITALITY, RESIDENTIAL
INDOOR APPLICATIONS ONLY

GENERAL SPECIFICATIONS

CONTENT:	100% Genuine Leather
THICKNESS:	1.4-1.6 mm
AVERAGE HIDE SIZE:	55 - 60 sq. ft.
STAIN RESISTANCE:	Crypton® Leather Soil/Stain Protection
CLASSIFICATION:	Semi-Aniline, Crypton®

PERFORMANCE SPECIFICATIONS

ABRASION RESISTANCE

ASTM D7255: CS10 Wheel Taber 500 Cycles/500 gram weight

LIGHT FASTNESS

ISO 105-B02: Blue Wool Scale ≥ 4

WET CROCKING

ASTM D5053 Class 4

ANTIBACTERIAL

AATCC 100 99.9% Reduction of Bacteria

REDUCED ENVIRONMENTAL IMPACT

This product does not pose any exposure risks associated with the substances listed in California Proposition 65
No added flame retardant chemicals - AB2998 Compliant
Finished without the use of solvents or lead
Emits low VOCs - SCS Indoor Gold Advantage Certificate

FLAMMABILITY REQUIREMENTS

California Fire Code Technical Bulletin No. 117-2013
NFPA 260
IMO 2010 FTP Part 8 (A.652(16))

CRYPTON® LEATHER CARE & CLEANING

Crypton® leathers provide the industry's greatest stain resistance and cleanability.

Occasional dusting with a clean, dry cloth or light vacuuming should be all that is necessary for regular cleaning and maintenance for your leather upholstery. In the case of a spill, wipe excess liquid immediately and let air dry. Crypton protected leathers can be disinfected with Clorox® products and up to a 5% bleach solution (sodium hypochlorite).

Refer to Crypton Leather Care & Cleaning Guide for additional cleaning instructions.

PRODUCT NOTES

Leather is a natural product and will vary slightly from hide to hide. Available in full hide increments only.
Special Order Leather Pattern - Additional lead time required.

UNITED

SINCE *Fabrics* 1946

800.347.8344

UnitedFabrics.com