

Milkshake



Eggnog



Sandstone



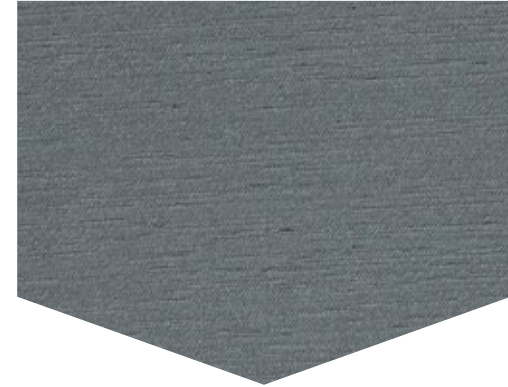
Marble



Alloy



Concrete



Glow



Maize



Honey Mustard



Portabello



Walrus



Iron



Autumn



Papaya



Cherry



Ruby Peony



Grape



Night



Emerald



Leapfrog



Mist



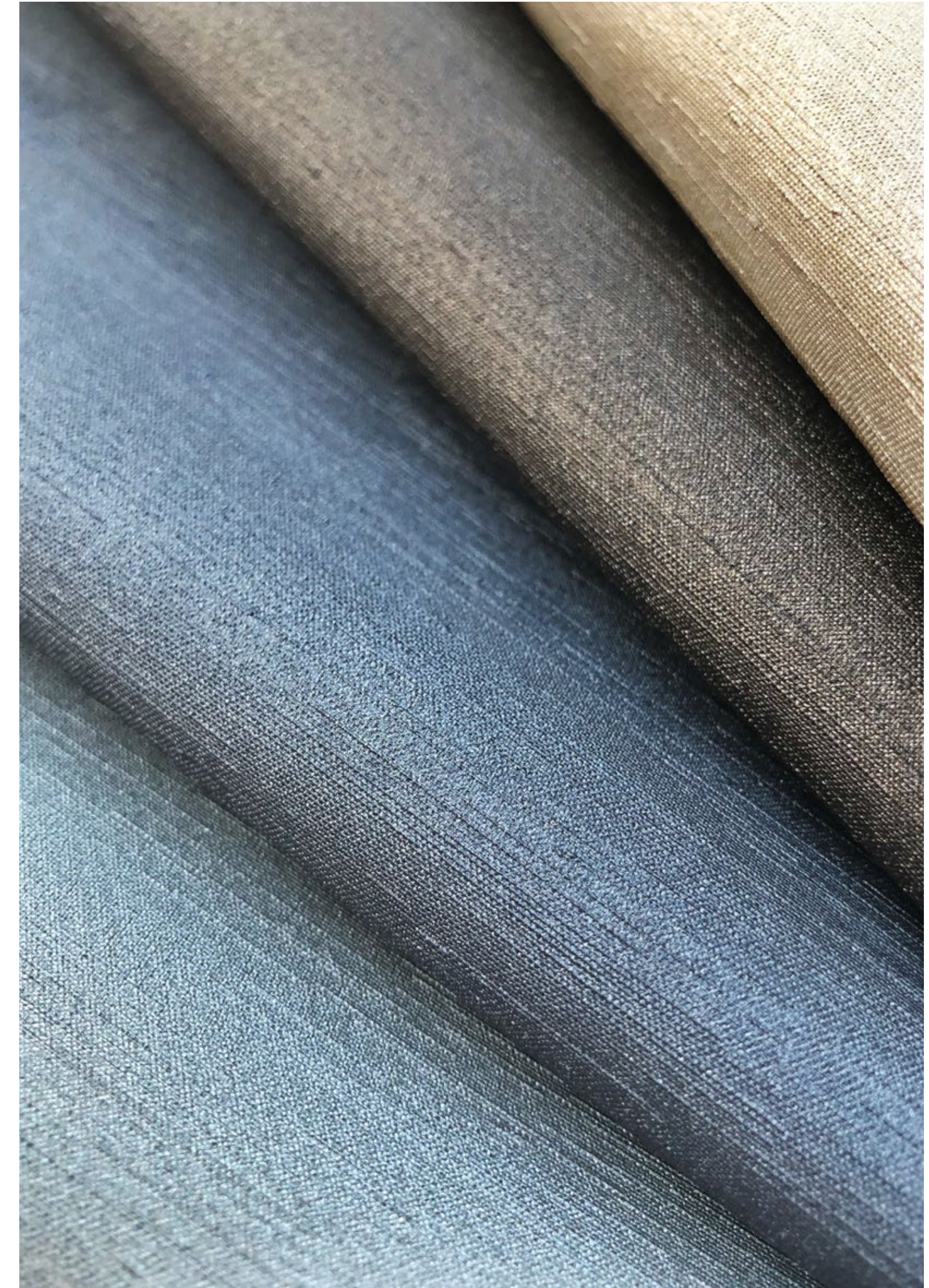
Island



Lagoon



Sapphire



INFO & CLEANING



OBI

SUITABLE FOR:
HEALTHCARE, HOSPITALITY, CONTRACT, EDUCATION, AUTOMOTIVE, RESIDENTIAL
INDOOR APPLICATIONS ONLY

GENERAL SPECIFICATIONS

CONTENT	Surface: 100% PVC (Phthalate Free) Backing: 100% Polyester
WIDTH	54"
WEIGHT	30.0 oz.
ROLL SIZE	30 yards
STAIN RESISTANCE	Resilience™

PERFORMANCE SPECIFICATIONS

ABRASION RESISTANCE	250,000+ Double Rubs	ASTM D4157-13 Wyzenbeck
COLORFASTNESS TO LIGHT	500 Hours	AATCC 16.3-2014, Option 3
COLORFASTNESS TO CROCKING	5.0 Wet, 5.0 Dry	AATCC 8-2016
COLD CRACK	-20° F	CFFA-6a-2007
BLEACH RESISTANCE	10% Dilution	AATCC 107-2013
SULFIDE STAIN RESISTANCE	Yes	

FLAMMABILITY REQUIREMENTS

California Fire Code Technical Bulletin No. 117-2013, Section E
UFAC Class I
NFPA 260
FMVSS 302

UNITED FABRICS®

800.347.8344
UnitedFabrics.com

REDUCED ENVIRONMENTAL IMPACT

This product does not pose any exposure risks associated with the substances listed in California Proposition 65
No added flame retardant chemicals - AB2998 Compliant
No added Anti-Bacterial / Anti-Microbial Chemicals
Pthalate Free
Lead / Heavy Metal Free
BPA Free / TRIS Free / Formaldehyde Free
Does not contain conflict minerals



CARE & CLEANING

PROMPT CLEANING IS ALWAYS RECOMMENDED. CLEANING STEPS ARE LISTED BY TYPE OF STAIN.

REGULAR CLEANING AND MAINTENANCE (Dirt & Grime)

Clean the soiled area with mild soap and water, then rinse with fresh water and wipe dry with a clean cloth.

FOOD STAINS / OILS (Mustard, Ketchup, Chocolate, Coffee/Tea, & Salad Dressing)

Wipe affected area with a soft cloth with appropriate pressure. If some stain persists, clean with mild soap and water.
Rinse with fresh water and wipe dry.

HEALTHCARE / DISINFECTION (Blood, Urine, & Betadine)

Clean the soiled area with a 10% solution of Household Bleach and water.
It is important to rinse the cleaned area with fresh water after applying the bleach solution.



DIFFICULT STAINS

Clean the soiled area with 50% solution of Isopropyl Alcohol (Rubbing Alcohol) and water. It is important to rinse the cleaned area with fresh water after applying the alcohol solution.